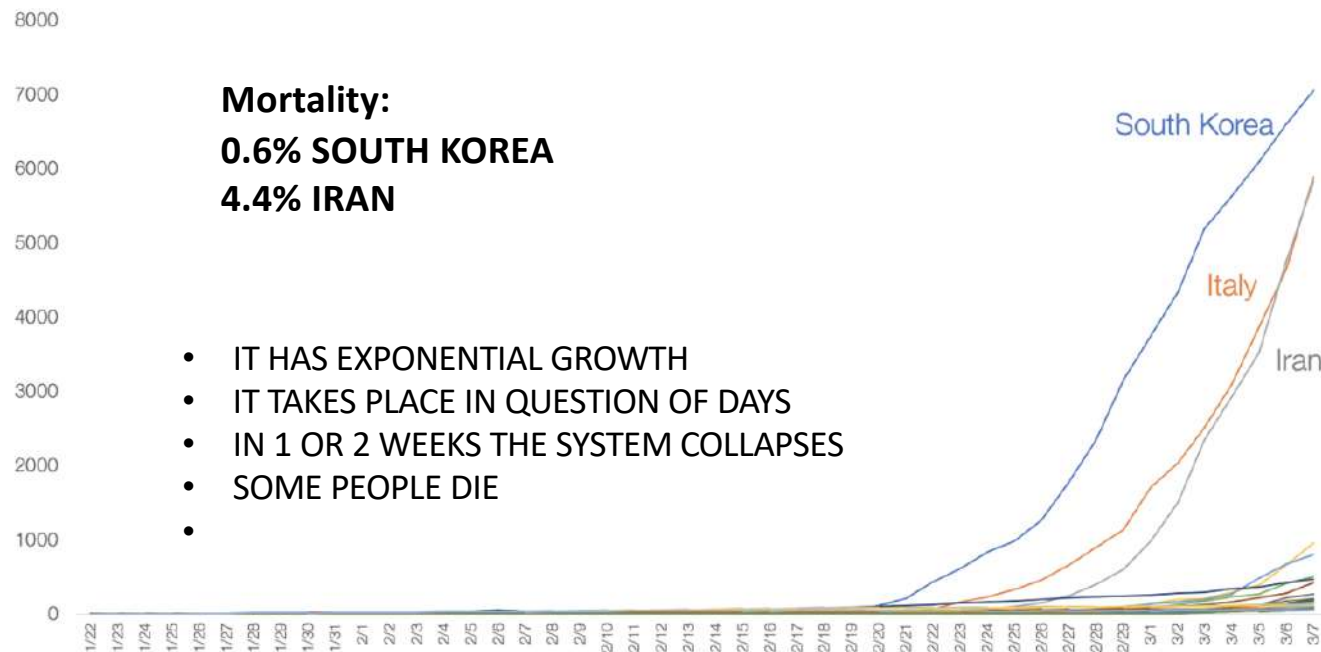


**PROPOSAL SERVICE SUPPORT FOR COVID-19 CONTROL IN REAL TIME USING ARTIFICIAL INTELLIGENCE PLATFORM AND BIG DATA**

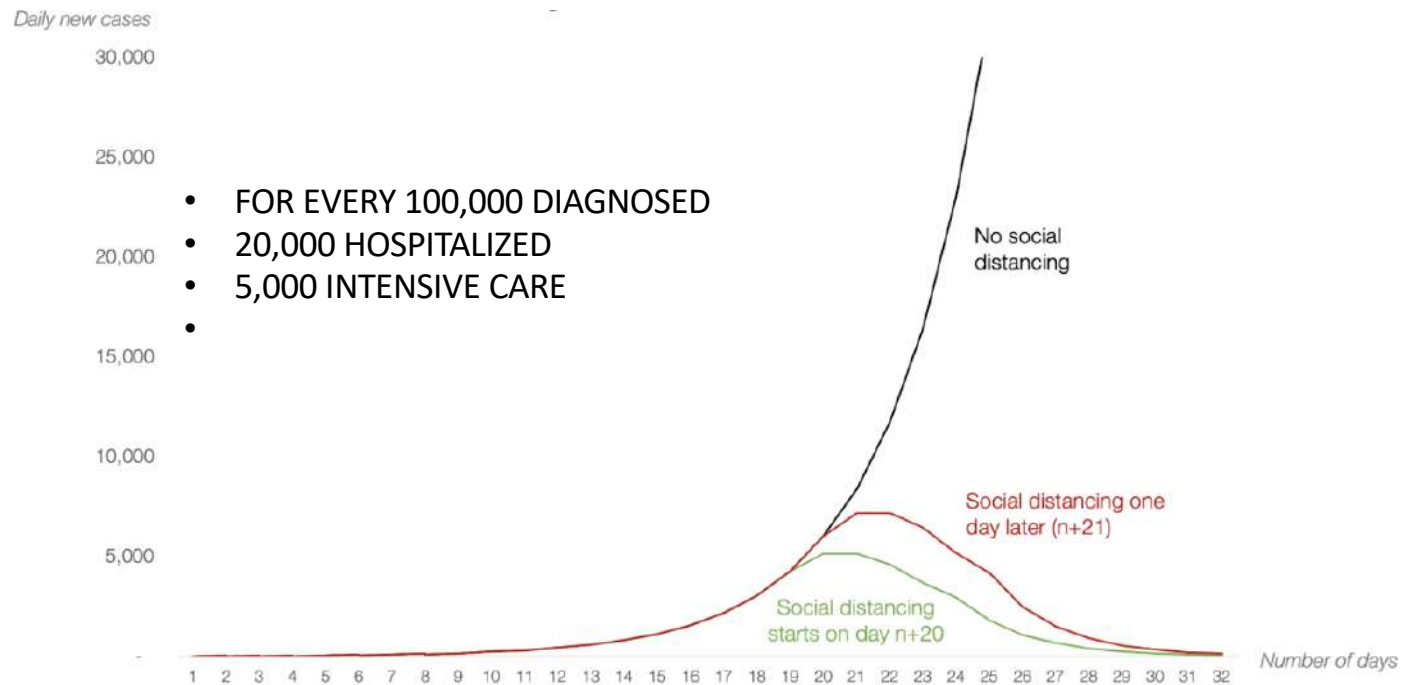
# COVID-19 COREA, ITALY, IRAN... (GROWTH PER COUNTRY EXCLUDING CHINA)



Source: Tomas Pueyo analysis from primary data from Github:  
[https://github.com/CSSEGISandData/COVID-19/blob/master/csse\\_covid\\_19\\_data/csse\\_covid\\_19\\_time\\_series/time\\_series\\_19-covid-Confirmed.csv](https://github.com/CSSEGISandData/COVID-19/blob/master/csse_covid_19_data/csse_covid_19_time_series/time_series_19-covid-Confirmed.csv)

# COVID-19 WHAT TO DO. SOCIAL DISTANCE

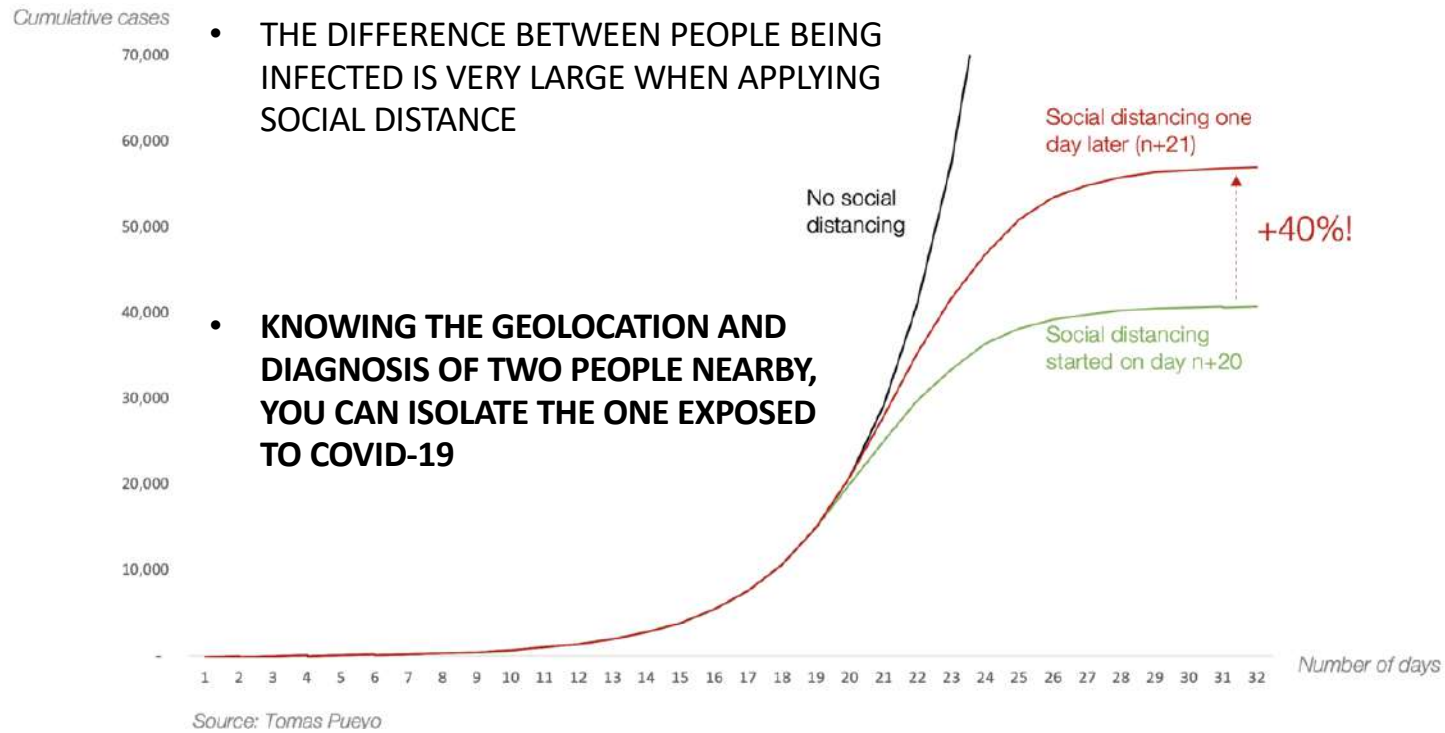
## Social distance application model with 1-day apart



- FOR EVERY 100,000 DIAGNOSED
- 20,000 HOSPITALIZED
- 5,000 INTENSIVE CARE
- 

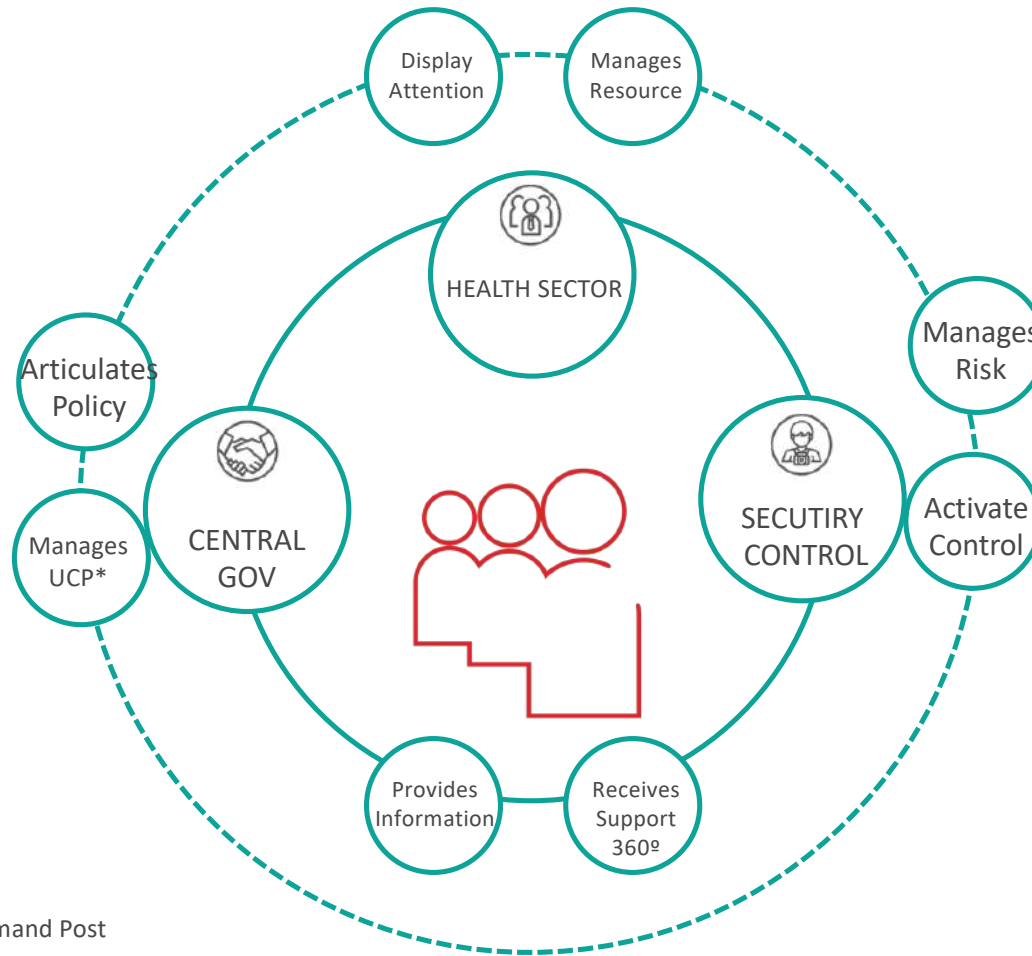
Source: Tomas Pueyo

# COVID-19 SOCIAL DISTANCE

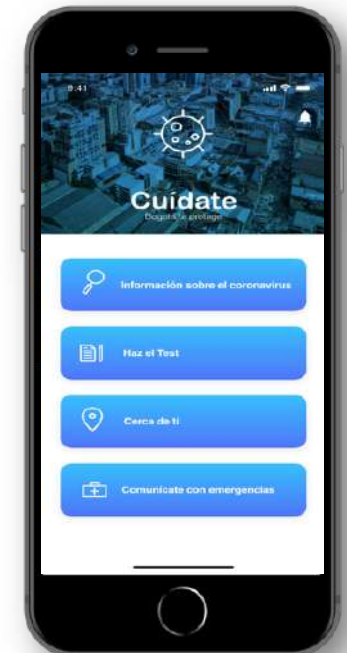


# THE PERSON AS THE CENTRAL AXIS OF INFORMATION

## Measure to be able to act



\*Unified Command Post





# COVID-19 MANAGEMENT AND CONTROL PLATFORM BASED ON BIG DATA AND ARTIFICIAL INTELLIGENCE

Control Center



HEALTH SECTOR



CITIZENS

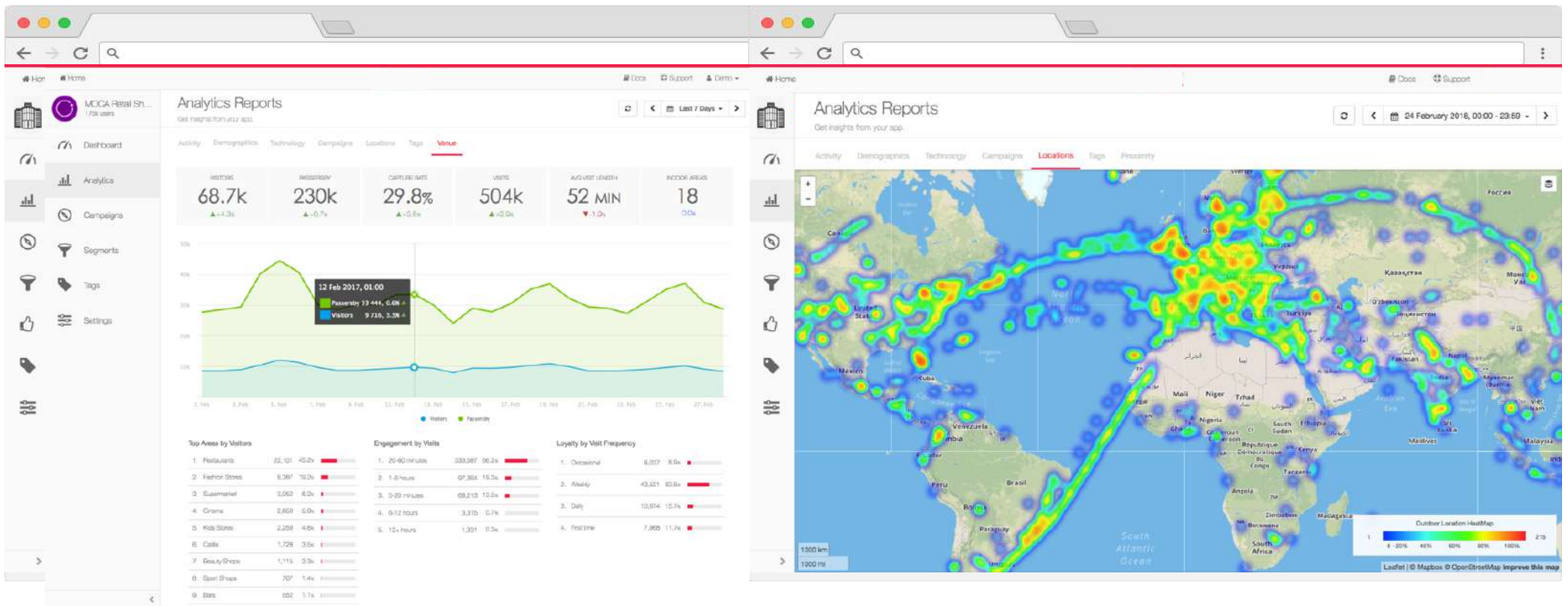


GOVERNMENT/SECURITY





# COVID-19 MANAGEMENT AND CONTROL PLATFORM BASED ON AI



## BENEFITS OF THE PLATFORM FOR ACTORS



### HEALTH SECTOR

- Measuring perceived health indicators
- Comparison of data monitored by App with objective health data
- Act when the citizen requires it in the location that Health departments recommend
- Measuring medical visits to hospitals in real time
- Capacity assessment of hospitals in the area with most urgent cases



### CITIZENS

- Preventive measures information
- Case information in your area to trigger containment
- Real-time communication with the state
- Request for assessment of your health status at home
- Low feeling of isolation even if confined
- Risk Zones and Automatic Tags Report
- Restricted mobility



### GOVERNMENT/SECURITY

- Real-time information on places with more cases
- Geo-Location of confined tourists
- Enforcement of public policies to prevent contagion
- Real-time information on monitored cases
- Understanding people's behavior to eliminate risks through immediate and predictive actions
- Population segmentation



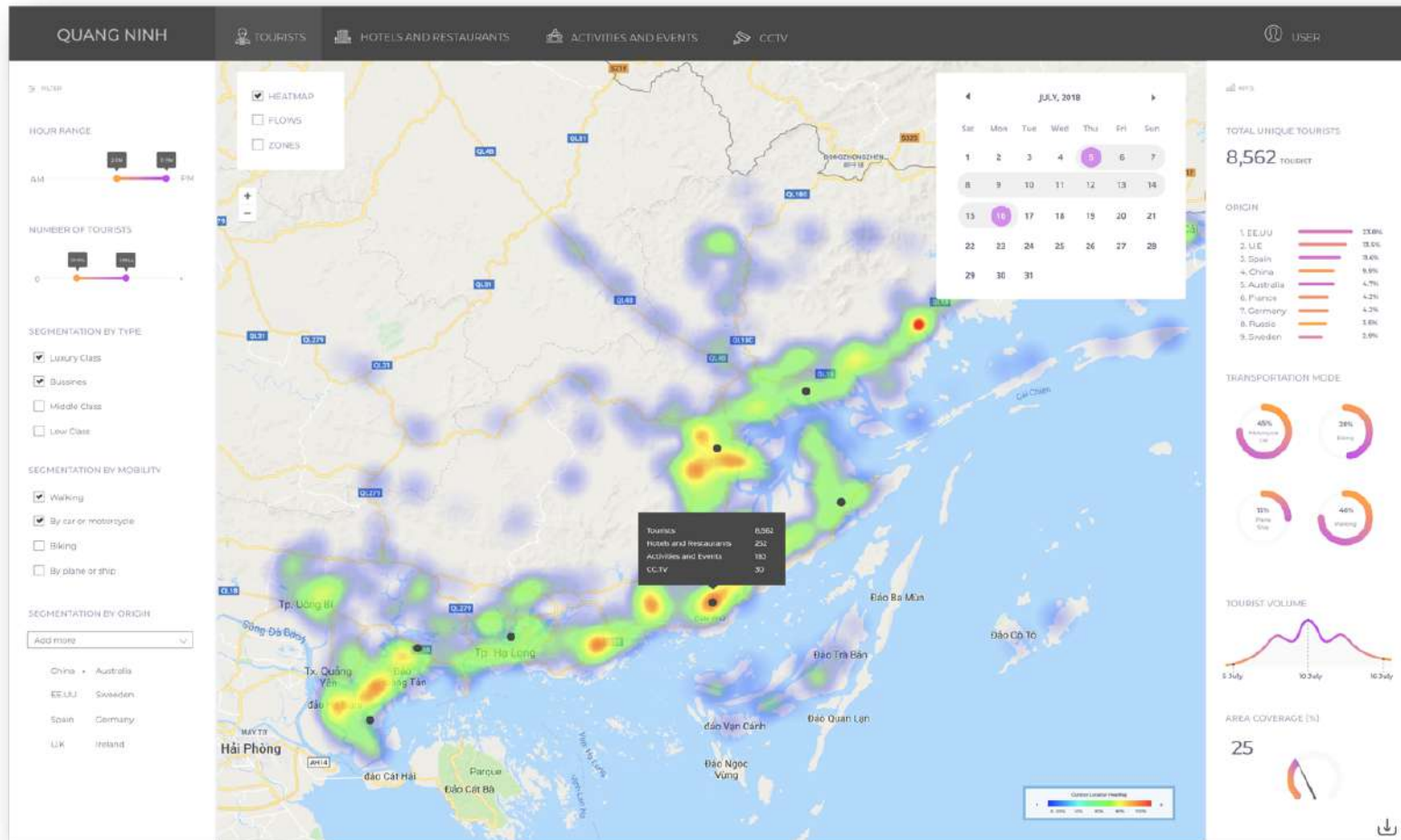
### BUSINESS SECTOR

- Decreasing the slowdown in the economy
- Monitoring employee health status
- Real-time monitoring of government officials on their job site.
- Containment of the spread of the disease
- Compliance with SSL regulations.
- Increased sense of well-being and normality.





# COVID-19 MANAGEMENT AND CONTROL DASHBOARD WITHIN THE UNIFIED CONTROL CENTER (UCC)



## REQUIREMENTS FOR IMPLEMENTATION



### HEALTH SECTOR

- Working with health policy teams to help them make data-driven decisions



### CITIZENS

- Massive use of the App to be able to plot all the relevant information
- Always allow geolocation and notifications



### GOVERNMENT/SECURITY

- Strong actions so that citizens and tourists always have the app with communication and geolocation permissions
- Coordination with the armed forces to implement risk and control policies



### BUSINESS SECTOR

- Support and promotion of the use of the platform by all employees of the company and their families.



## OTHER BENEFITS OF THE PLATFORM

Our platform allows you to quickly connect with existing mobile health applications (example: STOP COVID19 CAT, 061 CatSalut Respon) and will be able to detect outbreaks through real-time geolocation of users. This will allow us to know which areas are most infected or prone to becoming infected so that the Government takes appropriate action.

What can we offer?

- Real-time dashboard for Coronavirus test tracking of all users to see their evolution.
- Communication module to send messages between Health sector/Government and citizens (to avoid collapse of phones lines and the health systems)
- Alert system to alert when a user marked as "infected" leaves a radius approx. 100 m. (you will get a push message telling you to return home)
- Analytics and Case Monitoring by Geolocation
- Number of users registered in the App
- Number of users who take the test and segment those users (infected, with symptoms, no symptoms, etc.)
- Number of alerts sent / Number of alerts received with the user
- List of alerts: Users who have left their confinement area.
- Number of alerts by zip code, by neighborhood and street (surveillance reinforcement in that area)
- Heat maps to see the areas of contagion
-



**Roberto Ponce**

[Rponce@smartlivingprojects.com](mailto:Rponce@smartlivingprojects.com)

+1-787-436-8427

