

Agenda

Next Steps

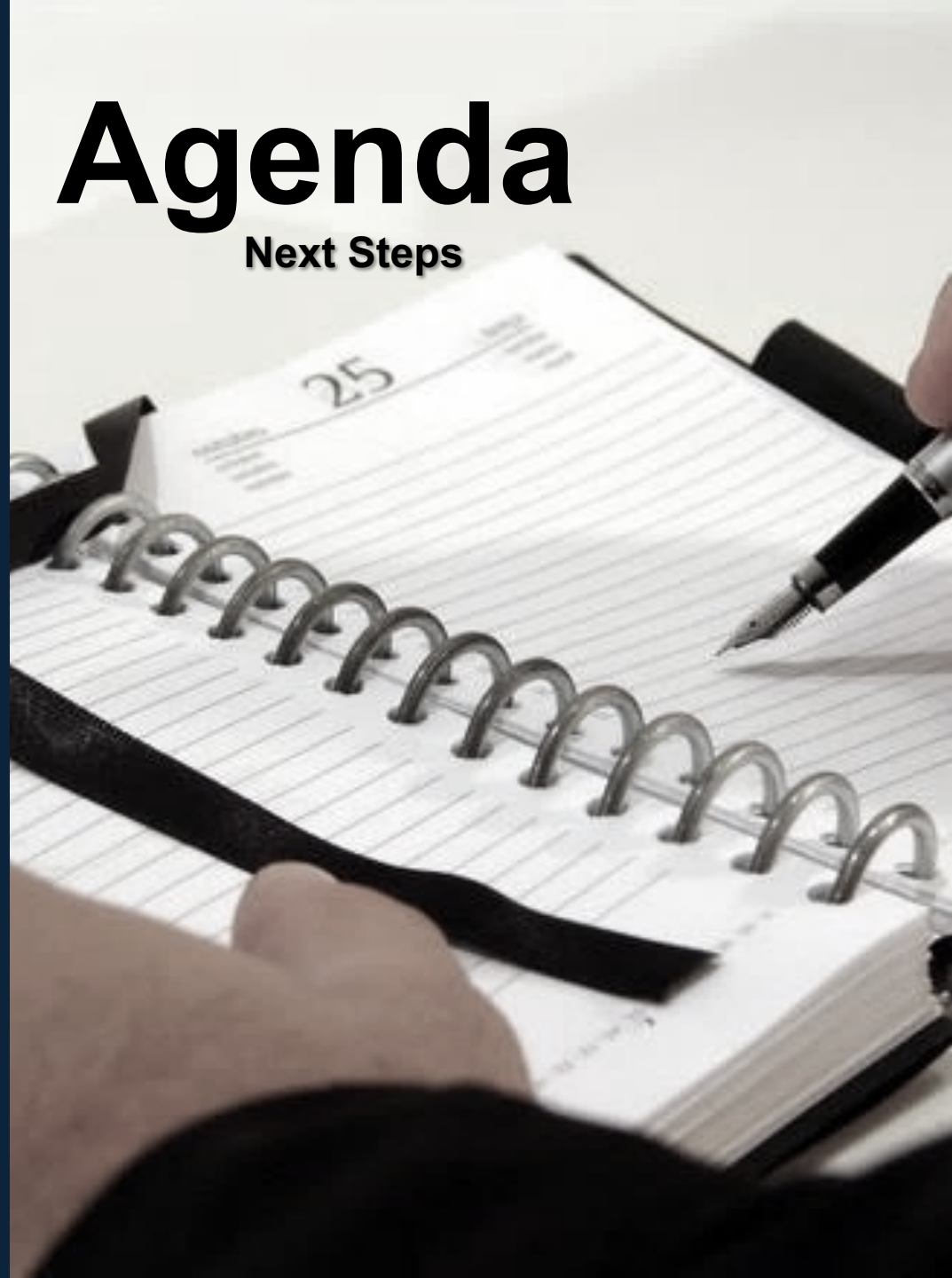
01

02

03

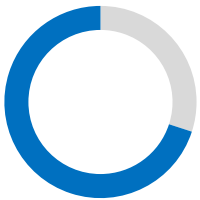
04

05



Problem Statement

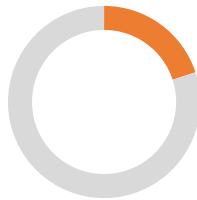
Not enough supply of trained and certified workers in 3 environmental skilled trades: Mold-Lead-Asbestos to meet the demand needed for renovating/rebuilding PR and the VI



___% _____



___% _____



___% _____



Our Vision



Vision



Mission



Goals

Brainstorming and Idea Generation Process



SWOT Analysis

Strengths

- Continued personalized service
- Expanded services (i.e. Server consultation set-up)
- Flexibility in managing request

Weaknesses

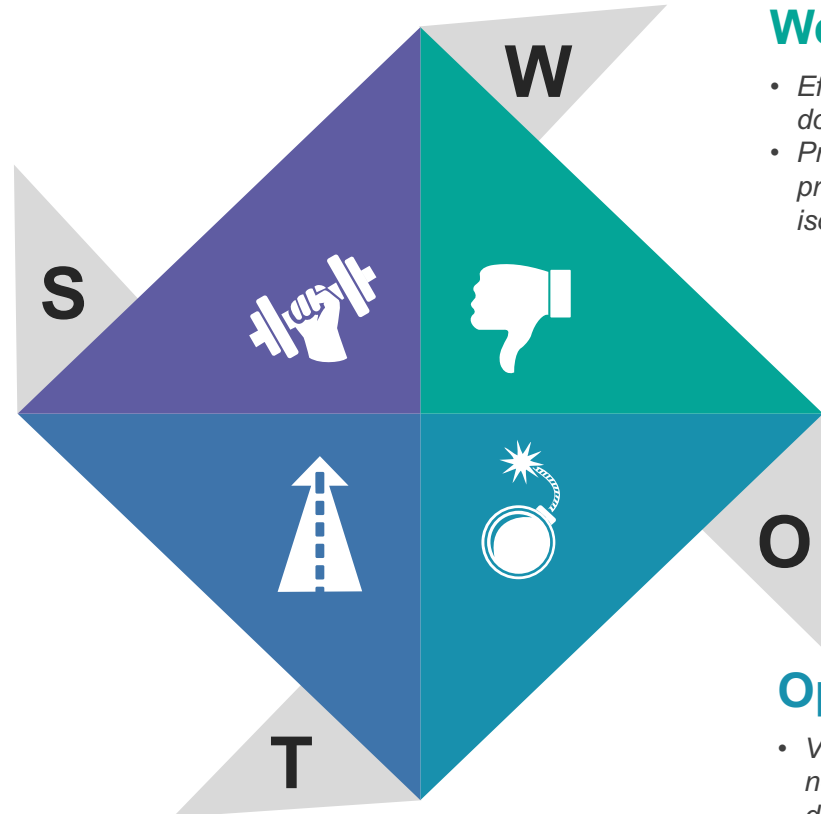
- Efficiency: IT rarely turns down a request
- Preventative maintenance: problems are addressed in isolation

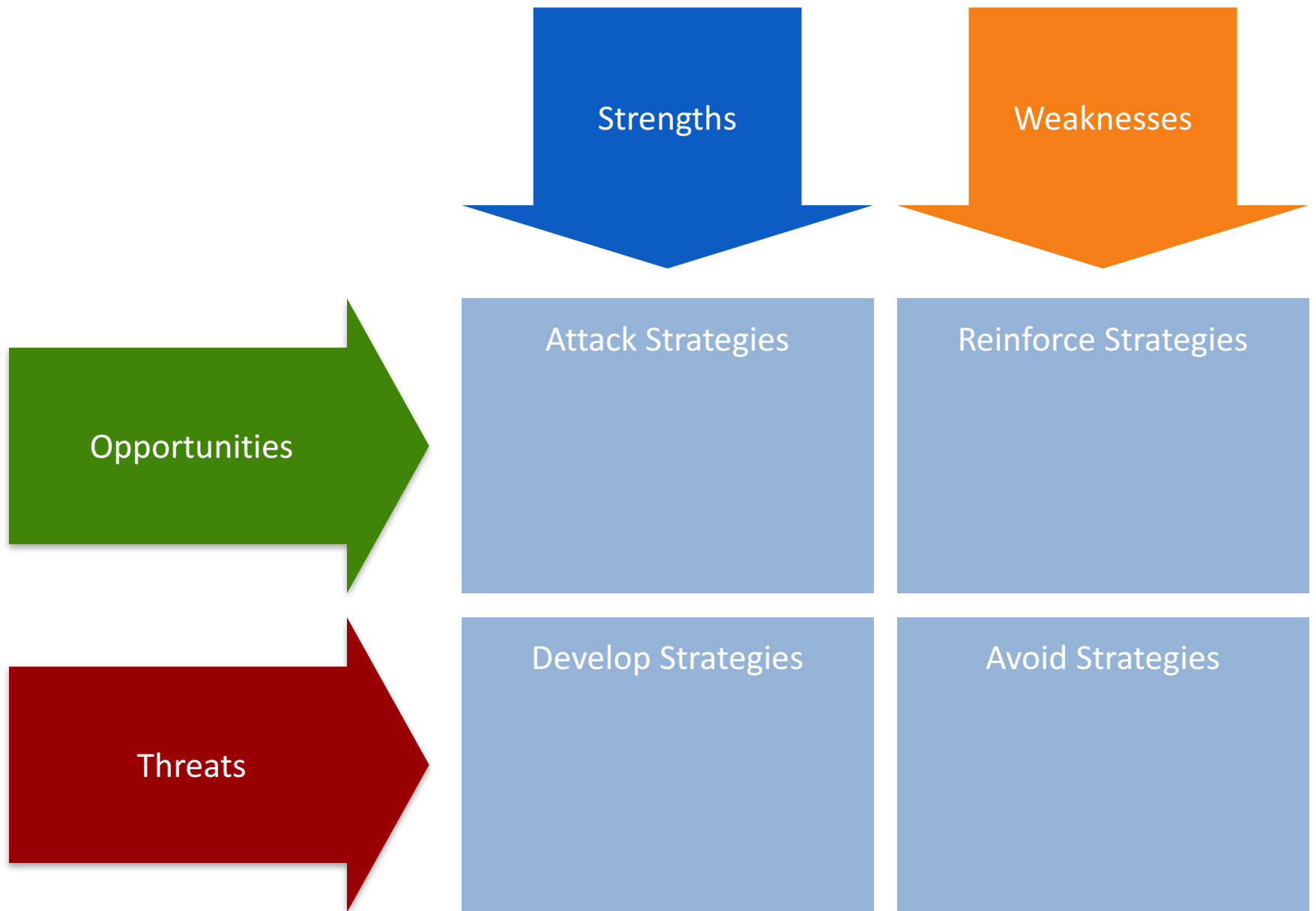
Threats

- Unstable campus IT environment causing a lack of dependable centralized campus services

Opportunities

- Virtualization, leveraging of new offerings for software distribution and management
- Transfer server infrastructure to virtual servers





SWOT Template

Strengths

Your advantages

Weaknesses

Areas for improvement

Opportunities

Situations to apply your advantages

Threats

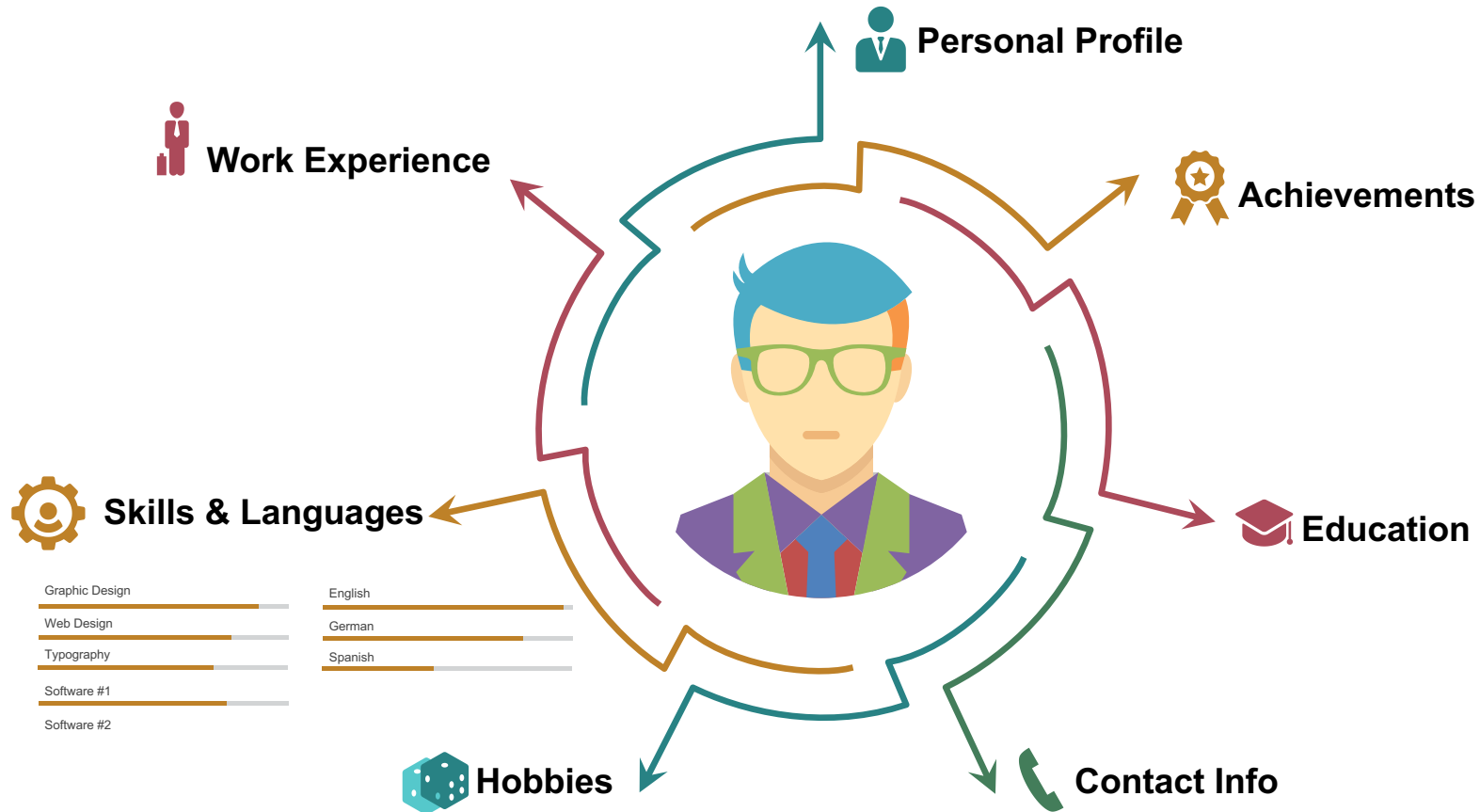
Where you are at risk

Workforce Development Challenges

Challenges



Environmental Skilled Trades: Mold-Lead-Asbestos



Workforce Projections- A Pipeline Approach



Team Achievements

01 |

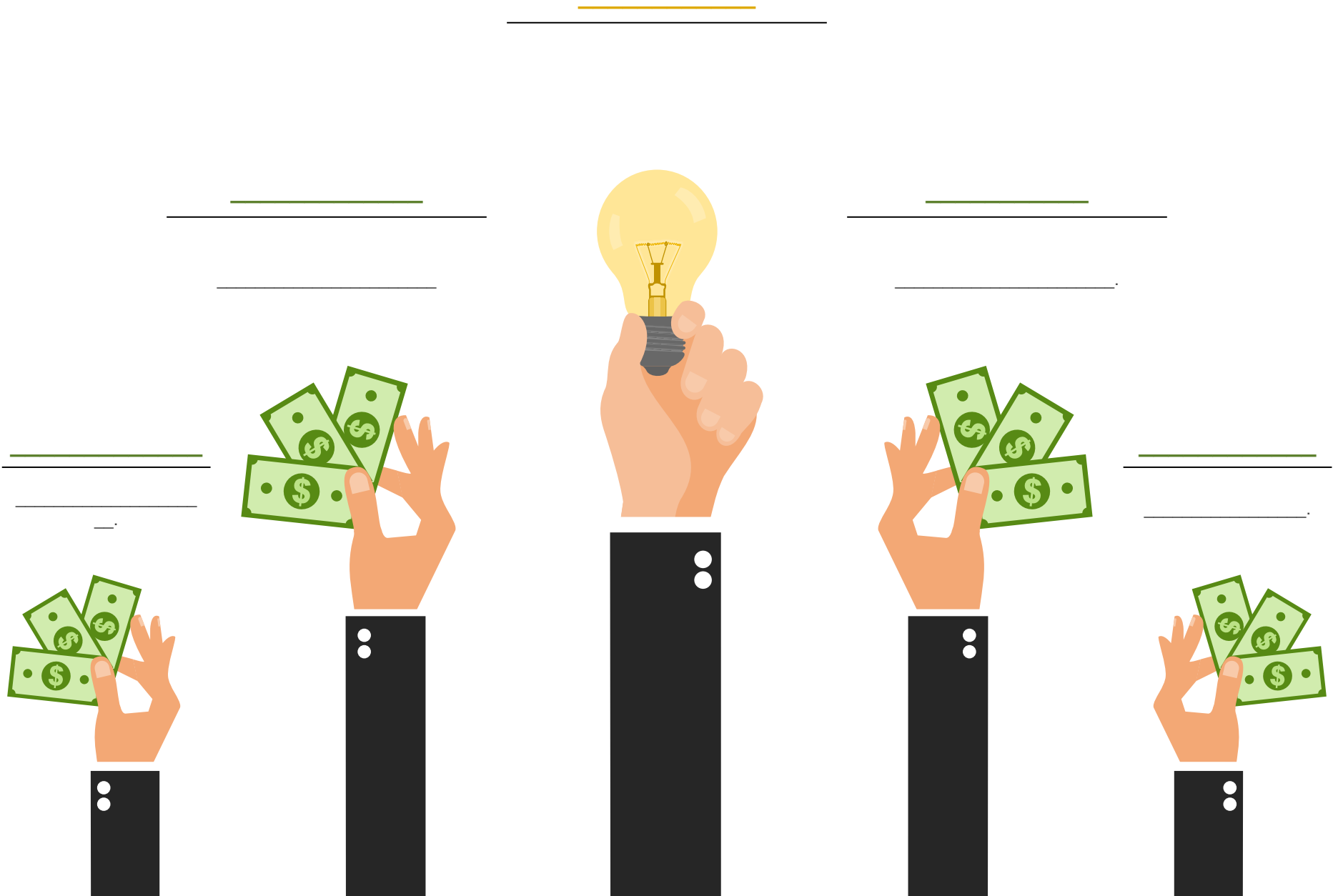
02 |

03 |

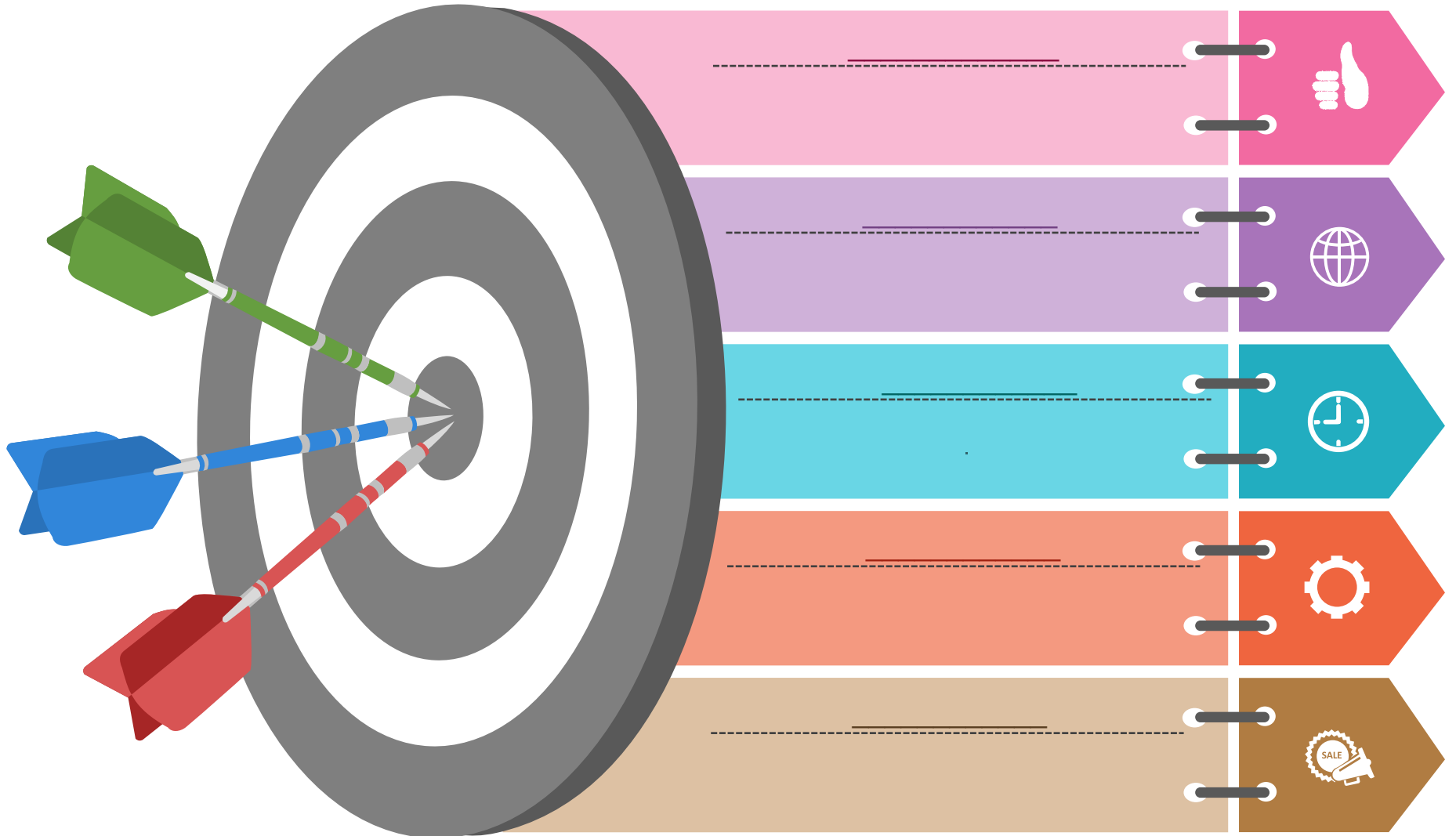
04 |

05 |





Target



Worker Training Timeline

Today

Q1

Q2

Text Here

January

February

March

April

May

June

July

Project Week

Phase One

Project Conception and Initiation

Phase One

Project Definition and Planning

Phase One

Project Launch of Execution

Project Charter

Main Review

Initiation

Scope and Goal Setting

Budget

Work Bkdwn Structure

Text Here

Text Here

Text Here

Text Here

Text Here

Text Here

Text Here

P
R
O
J
E
C
T

E
N
D



PUERTO RICO CHAMBER OF COMMERCE'S HEALTHY BUILDINGS' TASK FORCE

Dr. Jeannette Vázquez

csetalleres@gmail.com

(787) 627-6634

Ameesha Mehta-Sampath

Mehta-Sampath.Ameesha@epa.gov

212-637-3719 (w)

646-479-7516 (c)

