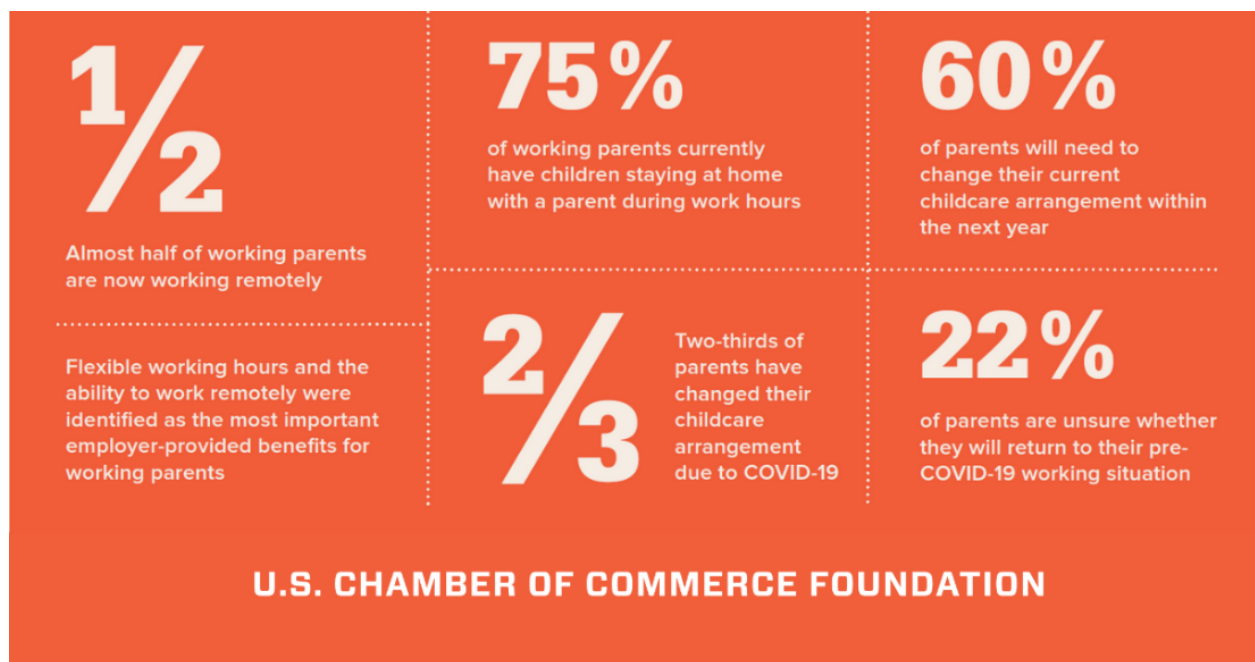


Most Parents Feel Their Current Childcare Arrangement is Unsustainable

A [report](#) released today by the U.S. Chamber Foundation's Center for Education and Workforce revealed that the majority of parents feel their provisional childcare arrangement is unsustainable. More than one in five are unsure whether they will fully return to work.

The report examines how working parents of children under the age of six are navigating childcare during the coronavirus pandemic and is the first in a series of polls that will survey working parents and employers into the fall.

Key takeaways: COVID-19 has altered the work environment of nearly 90% of working parents and caused two-thirds to adjust their childcare arrangements. Sixty percent of working parents say they will need to change their arrangement within the year, and 35% will need to change within the next three months.



Big picture: Access to affordable, quality childcare was already [hard to come by](#) in a strong economy, but the pandemic is creating additional challenges for families to find childcare that meets their needs. Parents now face the [dilemma](#) of trying to find new childcare arrangements or trying to balance working from home while caring for their children.

Last week the U.S. Chamber [sent a letter](#) outlining Phase 4 legislation priorities. We asked Congress to enact targeted and temporary measures that address five key areas – one being financial support for childcare and K-12 schools for a safe reopening.

What's next: Thirteen million parents rely on childcare to be able to work. The challenge ahead is how to make sure those childcare options continue to exist.

To learn more about the U.S. Chamber Foundation's work on early childhood education [click here](#).

– Cheryl A. Oldham, Vice President of Education Policy, U.S. Chamber of Commerce & Senior Vice President of Education and Workforce, U.S. Chamber of Commerce Foundation